



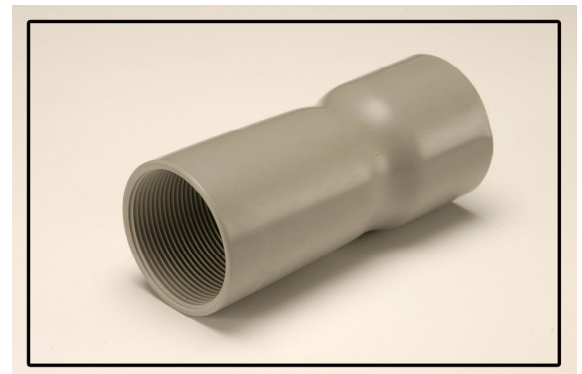
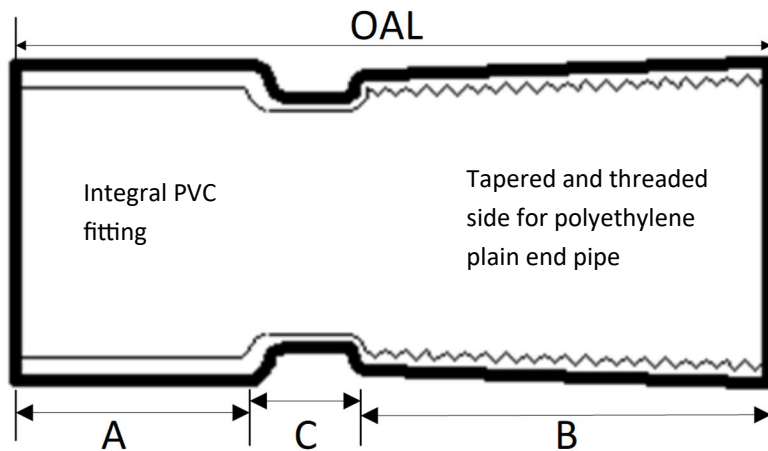
Tacoma Facility

1427 E 26th Street
Tacoma, WA 98421
(253) 272-7788

Quincy Facility

1302 NE Intermodal Way
Quincy, WA 98848
(509) 497-0350

POLY TO PVC ADAPTERS



Pipe Size (inches)	Overall Length (avg)	PVC Side A (avg)	Poly Side B (avg)	Gap C (min)	Weight (lbs)
1	4.5	1.25	2.5	0.75	0.184
1 ¼	5.0	1.375	2.625	1.0	0.288
1 ½	6.5	2.5	3.0	1.0	0.435
2	6.5	2.5	3.0	1.0	0.600
3	8.5	3.0	4.0	1.5	1.548
4	8.5	2.5	4.5	1.5	2.320
6	13.5	4.5	6.5	2.5	6.711

Advantages & Highlights of Poly-PVC Couplings

- Manufactured from Schedule 80 pipe conforming to UL 651 and NEMA TC-2 *Electrical Polyvinyl Chloride (PVC) Conduit*
- Compression formed interference fit conforms to UL651 and NEMA TC-3 *Polyvinyl Chloride (PVC) Fittings for Use with Rigid PVC Conduit and Tubing*
- Poly side is threaded and designed to grip plain end polyethylene pipe
- Threads are made to the following specifications
 - ½" - 2" = 10 threads per inch
 - 3" - 6" = 8 threads per inch
 - Taper is 3/4" per foot (approx. 3.5°)
- 2" Poly-to-PVC couplings have undergone tensile testing and have an average pull force over 325 lbs.
- Couplings are intended to be joined with a cement that is or contains a solvent for polyvinyl chloride
- Dimensions are approximate and subject to normal manufacturing tolerances

All dimensions are inches